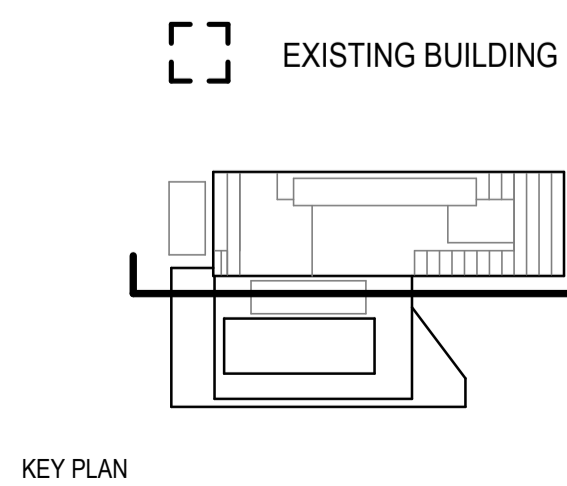


PROJECT MANAGEMENT: **ARUP**
 CLIENT: **UNIVERSITY OF OXFORD**
 MEP and SPECIALISMS: **HOARE LEA**

CIVIL ENGINEER AND STRUCTURAL ENGINEER: **RAMBOLL**
 LANDSCAPE ARCHITECT: **fira**

MATERIAL LEGEND
 1 - Precast Reconstituted Stone
 2 - Profiled Metal Panel - Copper alloy (Brass or Bronze TBC)
 3 - Precast Reconstituted Stone Ribbed Panel
 4 - Clear Glazing (Dark Bronze Anodised Aluminium Frame)



REV	DATE	DESCRIPTION
P03	25th Sept 2020	PLANNING SUBMISSION
P02	11th Sept 2020	PLANNING APPROVAL SUBMISSION
P01	3rd July 2020	PLANNING DRAFT SUBMISSION

GENERAL NOTES:
 1. DRAWINGS HAVE BEEN PREPARED ON AN ORIGINAL SHEET SIZE OF ISO A SERIES, A1 (841 x 594mm).
 2. HORIZONTAL DIMENSIONS SHOWN INDICATE FACE OF CONCRETE, FACE OF SHEATHING, CENTERLINE OF COLUMN GRIDLINE, OR FACE OF FINISH (INTERIOR), UNLESS OTHERWISE NOTED. VERTICAL DIMENSIONS INDICATE TOP OF SLAB, TOP OF SUBFLOOR, UNLESS OTHERWISE NOTED.
 3. THESE DRAWINGS ARE THE EXCLUSIVE PROPERTY OF NBBJ AND HAVE BEEN PREPARED FOR USE IN THE EXECUTION OF THE ENCLOSED PROJECT. USE OR REPRODUCTION FOR ANY OTHER PURPOSE WITHOUT THE WRITTEN PERMISSION OF NBBJ IS PROHIBITED.

PROJECT NAME: Life and Mind Building (LaMB)	
PROJECT NUMBER: 102346.00	STAGE: RIBA 3
AUTHOR: SB	CHECKED: IB
APPROVED: DU	
SCALE: 1:200 @ A1	ISSUE DATE: 25th Sept 2020
DRAWING NAME: PLANNING - PROPOSED ELEVATIONS - FLEX BLOCK - EAST	
DRAWING NUMBER: 269-NBBJ-LA-XX-DR-A-50206	ISSUE: P03

nbbj
 230 CITY ROAD, THIRD FLOOR
 LONDON, EC1V 2TT
 PHONE +44 (0)207 939 3700
 FAX +44 (0)207 939 3799
 www.nbbj.com