

PROJECT MANAGEMENT:

ARUP
Arup

CIVIL ENGINEER AND
STRUCTURAL ENGINEER:
RAMBOLL
Ramboll

CLIENT:

UNIVERSITY OF OXFORD
University of Oxford

LANDSCAPE ARCHITECT:
fira
Fira

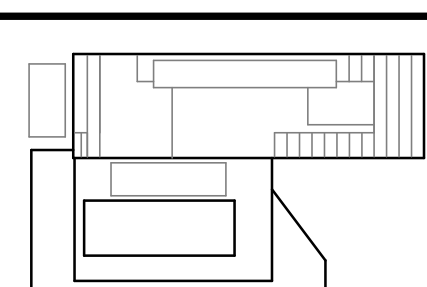
MEP and SPECIALISMS:

HOARE LEA
Hoare Lea

MATERIAL LEGEND

- 1 - Precast Reconstituted Stone
- 2 - Profiled Metal Panel - Copper alloy (Brass or Bronze TBC)
- 3 - Precast Reconstituted Stone Ribbed Panel
- 4 - Clear Glazing (Dark Bronze Anodised Aluminium Frame)
- 5 - Glass Fibre reinforced Concrete Panel to Match Precast Reconstituted Stone
- 6 - Backpainted Glass, Light Grey
- 7 - Dark Metal Cladding
- 8 - Black Timber Cladding
- 9 - Glasshouses

EXISTING BUILDING



KEY PLAN

DRAWING ISSUE HISTORY:

REV	DATE	DESCRIPTION
P03	25th Sept 2020	PLANNING SUBMISSION
P02	11th Sept 2020	PLANNING APPROVAL SUBMISSION
P01	3rd July 2020	PLANNING DRAFT SUBMISSION

GENERAL NOTES:

1. DRAWINGS HAVE BEEN PREPARED ON AN ORIGINAL SHEET SIZE OF ISO A SERIES, A1 (841 x 594mm).
2. HORIZONTAL DIMENSIONS SHOWN INDICATE FACE OF CONCRETE, FACE OF SHEATHING, CENTERLINE OF COLUMN GRIDLINE, OR FACE OF FINISH (INTERIOR), UNLESS OTHERWISE NOTED. VERTICAL DIMENSIONS INDICATE TOP OF SLAB, TOP OF SUBFLOOR, UNLESS OTHERWISE NOTED.
3. THESE DRAWINGS ARE THE EXCLUSIVE PROPERTY OF NBBJ AND HAVE BEEN PREPARED FOR USE IN THE EXECUTION OF THE ENCLOSED PROJECT. USE OR REPRODUCTION FOR ANY OTHER PURPOSE WITHOUT THE WRITTEN PERMISSION OF NBBJ IS PROHIBITED.

PROJECT NAME:

Life and Mind Building (LaMB)

PROJECT NUMBER:
102346.00

STAGE:
RIBA 3

AUTHOR: SB

CHECKED: IB

APPROVED: DU

SCALE: 1:200 @ A1

ISSUE DATE: 25th Sept 2020

DRAWING NAME:
PLANNING - PROPOSED ELEVATIONS - WEST

DRAWING NUMBER:	ISSUE:
269-NBBJ-ZZ-XX-DR-A-50208	P03

nbbj

230 CITY ROAD, THIRD FLOOR
LONDON, EC1V 2TT
PHONE +44 (0)207 939 3700
FAX +44 (0)207 939 3799
www.nbbj.com