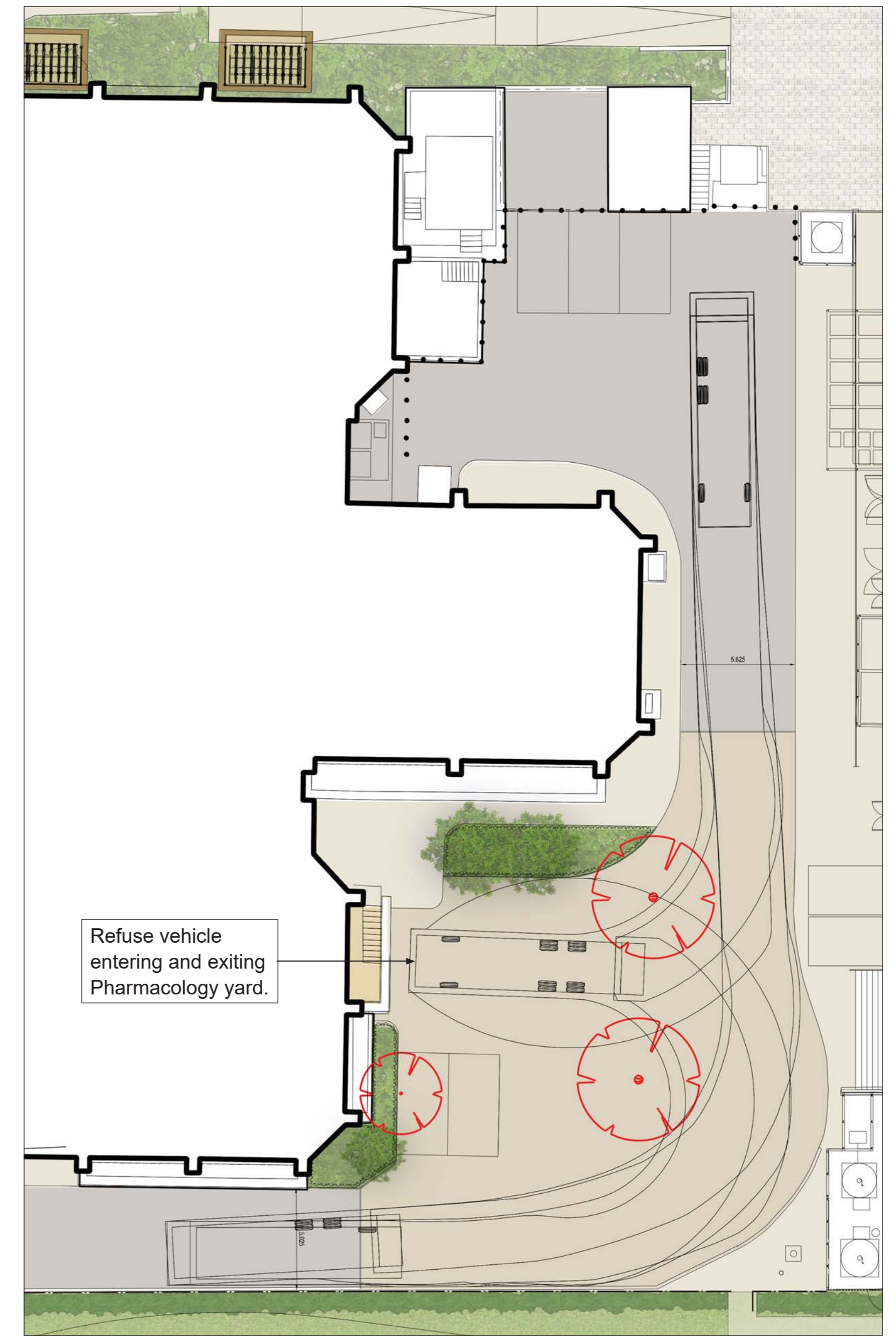
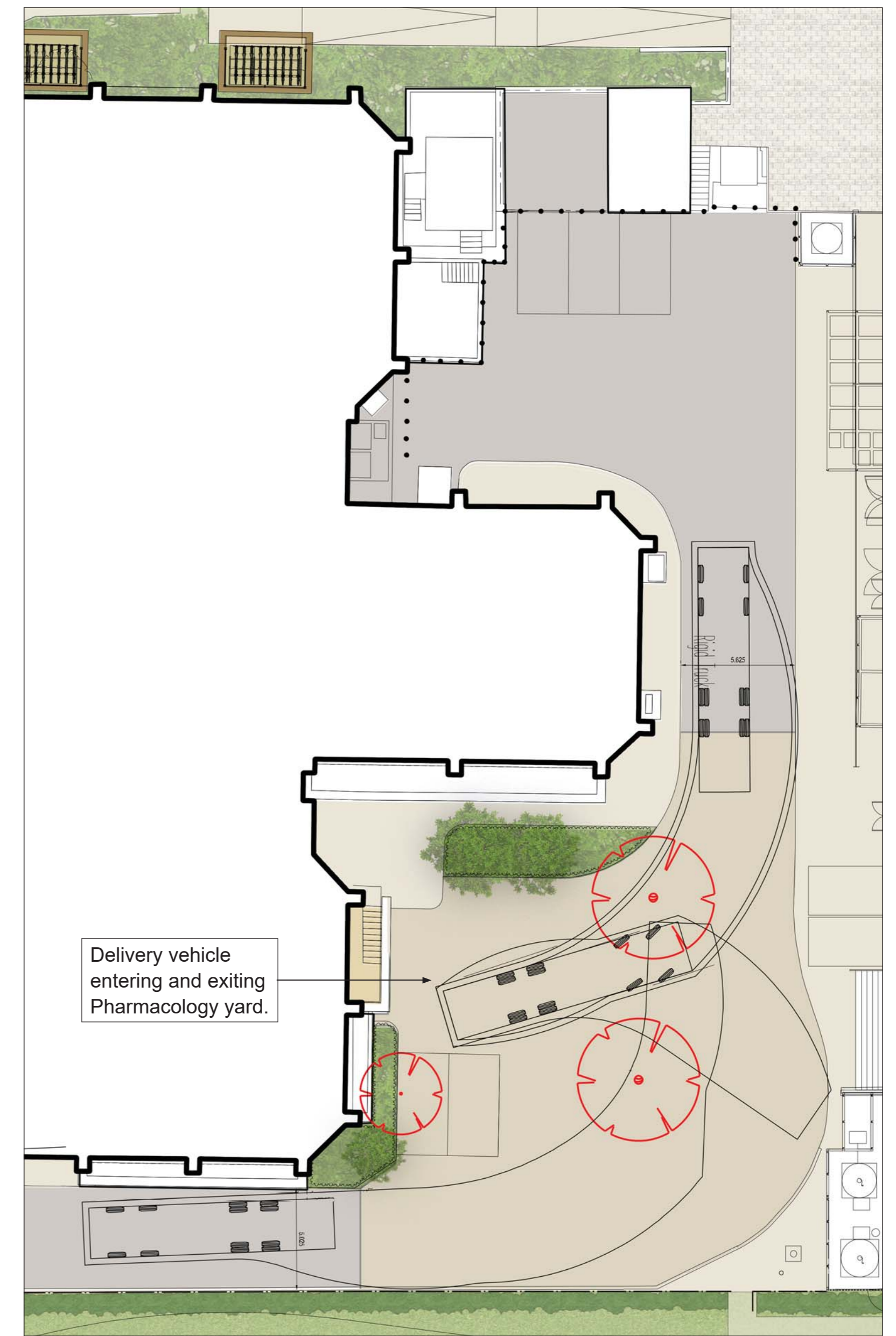




**VEHICLE TRACKING**



Do not scale this drawing. Landmark Services to be verified or coordinated in separate drawings from this drawing to be verified.

amendments

P01	10.09.2020 - First Issue Draft
P02	16.09.2020 - Cycle parking update
P03	25.09.2020 - Annotation update
P04	08.12.2020 - 36 no. cycle bays removed from Pharmacology rear.

**KEY & NOTES**

- SECURED AND COVERED CYCLE PARKING
- COVERED CYCLE PARKING
- SECURED NOT COVERED CYCLE PARKING
- COVERED ON STREET CYCLE PARKING
- ON STREET CYCLE PARKING
- MANSFIELD ROAD BLOCK DISABLED PARKING
- OPERATIONAL PARKING
- LIFE AND MIND BUILDING DISABLED PARKING
- EP PARKING
- MAIN PEDESTRIAN ACCESS
- MAIN SERVICE ACCESS
- PEDESTRIAN ENTRANCE
- VEHICLE ENTRANCE
- CONTROLLED BARRIER TO VEHICLE ACCESS ROUTE
- MANAGED REFUSE / CONTRACTOR / DELIVERY AND OPERATIONAL VEHICLE ROUTE
- EXISTING TREES TO BE REMOVED

NEW SPACES ADDED AS PART OF LAMB PLANNING APPLICATION:

Between BSB & LAMB	18
Corner CTL / St Cross Road	144
Along St Cross Road	172
Behind Peter Medawar (new shed)	22
Behind Pharmacology (2 new sheds)	36
Behind BSB on Mansfield Road	121
<b>TOTAL</b>	<b>613</b>

CAR PARKING SPACES AFTER LAMB COMPLETION:

	Shown	Required
Disabled Parking	7	5-6
Operational Parking	14	12
EP Parking	3	3-4
Staff Parking	0	0



Drawing status: **STAGE 3 ISSUE**

project:  
Life and Mind University of Oxford

job number:  
LP2177

drawing title:  
Site-wide Cycle, Vehicle Parking and Servicing Strategy

drawing number:  
269-FIRA-ZZ-XX-DR-L-0001

revision:  
P04 scale 1:250 @ A0 date 10.09.20

for information:  
DW RS 10.09.20

for construction:  
DW RS 10.09.20

